



PRESS DOWN ROTATOR



Key Attributes

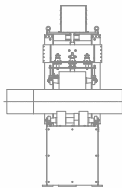
- Large capacity for various pipe connections: Pipe to Pipe, Pipe to Elbow, Pipe to T Joint, and eccentric connections not possible on standard rotators.
- Adjustable rotation speed for different pipe sizes.
- Quick and precise centering of pipe between rollers.
- Flexible pipe handling.
- Suitable for pipes with elbows, flanges, nozzles, etc.
- Common line height: Standard 800 mm, customizable.
- Standard PU wheels, optional steel knurled wheels.
- Rotation speed controlled by VFD (Variable Frequency Drive).
- Remote pendant with start/stop, up/down, speed control, emergency stop, and 5-meter cable.
- Optional: Footswitch output connection.
- Optional tilting feature.

PRESS DOWN ROTATOR

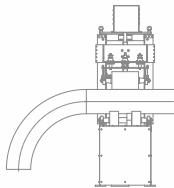
Technical Specifications

Model	PDR 3-10	PDR 8-16	PDR 8-32
Pipe Capacity	3" to 10" (75 – 250 mm)	8" to 16" (200 – 400 mm)	8" to 32" (200 – 800 mm)
Rotating Capacity	2200 lbs (1 Ton)	4400 lbs (2 Tons)	11000 lbs (5 Tons)
Driven Rollers	2	2	2
Press Down Idler Rollers	1	2	2
Drive Roller Distance adjustment	Fixed	Fixed	Through manual leadscrew and common shaft
Maximum Length of Pipe with support rollers	6m	6m	6m
Roller Height from Ground	750 mm	750 mm	750 mm
Vertical Adjustment, Motorised, speed	500 mm/min	500 mm/min	500 mm/min
Vertical Adjustment stroke, Motorised	400 mm (16")	600 mm (24")	1000 mm (40")
Vertical Adjustment, Fine, Manual	100 mm (4")	100 mm (4")	100 mm (4")
Surface Speed	4 to 40 IPM (100 to 1000 mm/min)		
Idler Support Rollers	On Rails (Rails on request)		
Power supply	3 Phase, 400 V, 50/60 Hz. Input power cable not included.		

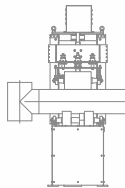
Applications



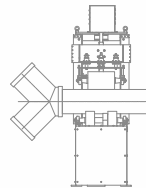
PIPE TO
PIPE JOINT



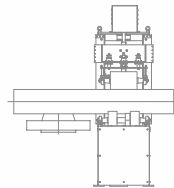
PIPE TO
ELBOW JOINT



PIPE TO
TEE JOINT



PIPE TO
YOLK JOINT



PIPE TO
NOZZLE JOINT

WARRANTY DETAILS

Duration: One year from the commissioning date. ADOR WELDING LIMITED ensures new equipment sold through Plant/Area Offices/Authorized Distributors is free from defects in materials and workmanship, performing as per applicable specifications.

Cable Wear: ADOR is not liable for wear and damage to cables caused by flexing and abrasion. Users must regularly inspect cables for wear and address any issues before cable failure occurs.

Design and Specification Changes: ADOR WELDING LIMITED reserves the right to modify designs and specifications without prior notice due to continuous development.

Customer Care: Supported by a dedicated customer care package.



ADOR WELDING LIMITED

Corporate Marketing Office: Survey No.147 / 2B+3, Near Khandoba Mandir, Akurdi Chowk, Chinchwad, Pune - 411019, Maharashtra, India.

☎ 1800 233 1071 ✉ cmo@adorians.com ☎ +91 20 40706000

www.adorwelding.com

